

# CLAYTON MEADOWS

## *Affordable Senior Living*



2080 SE Queen Ave  
Albany, OR 97321  
(541) 791-9175



Affordable apartments in Southeast Albany for low-income seniors 55 yrs+:

- Fully equipped kitchens with refrigerator, stove & dishwasher
- 1 & 2 bedroom apartments
- Laundry facilities onsite
- Energy efficient design & appliances
- Near shopping center
- Handicap accessible units available
- Large community room with full kitchen
- Smoke-free property



**Clayton Meadows serves seniors and disabled persons, age 55 and older, whose total household income is less than 50% to 60% of the area median income.**

**Annual household income must be less than\*:**

One Person	\$36,900	Two Persons	\$42,180
------------	----------	-------------	----------

\*Income limits are subject to change without notice dependent on HUD guidelines.

Bedroom Size	# of Units	Square Footage	# of ADA Units
One (1)	32	600	1
Two (2)	17	825	2

**Rents vary based on income and apartment location\*\*:**

1 Bdrm - \$727
2 Bdrm - \$864

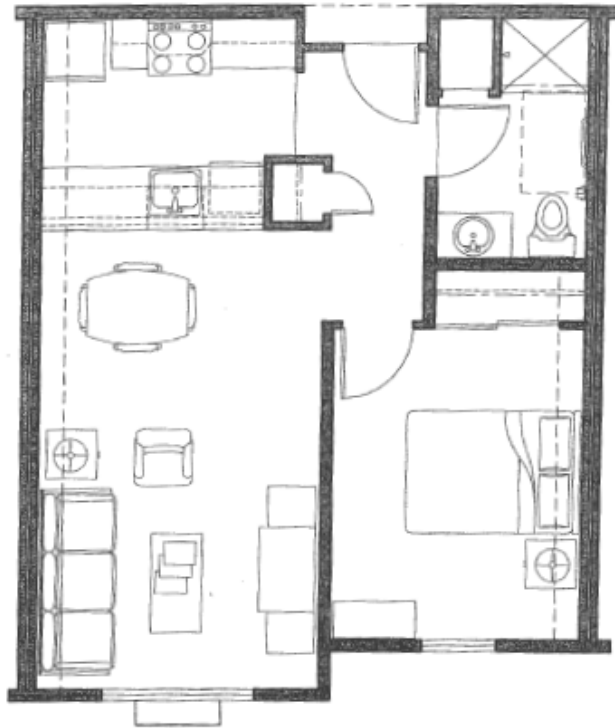
\*\* Rents are effective 03/01/2024. Rent concessions may result in lower rents for applicants with lower incomes.

**PLEASE ONLY RETURN THE APPLICATION PAGES – KEEP THE INFORMATION PAGES FOR YOURSELF.**

**Applications are also available at:** Linn -Benton Housing Authority, 1250 Queen Ave SE, Albany, OR 97322  
(541) 926-4497

# Unit Floor Plans May Vary

One Bedroom Sample Floorplan



Two Bedroom Sample Floorplan

