

GARDEN VIEW APARTMENTS

Serving Low-Income Senior Citizens and Veterans

3011 South Main Rd.
Lebanon, OR 97355

*Rents as of 12/01/2023:

| Unit Rents | |
|------------|-------|
| 1 Bdrm | \$680 |
| 2 Bdrm | \$814 |



Garden View Apartments will consist of 48 units designed as independent living for persons age 55 and over

| Income Limits | |
|---------------|----------|
| 1 Person | \$33,420 |
| 2 Person | \$38,160 |

| Bdrm Size | # of Units | Sq. Feet |
|-----------|------------|----------|
| One (1) | 42 | 615 |
| Two (2) | 6 | 881 |

- Walking distance to nearby shopping
- Non-Smoking Property
- Open floor plans
- Fully equipped kitchens with refrigerator and stove
- 1- & 2-bedroom apartments
- Community garden beds
- Laundry facilities onsite
- Small town setting
- Water, sewer and garbage services provided
- ADA Accessible Units Available



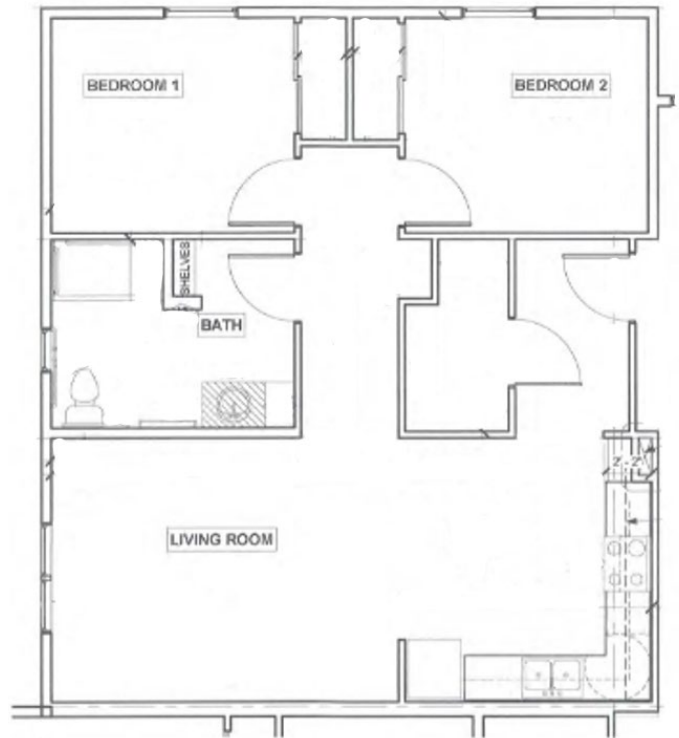
1 Bedroom

Units 101, 102, 103, 104, 105, 106, 107, 108, 111, 112, 113, 201, 202, 203, 204, 205, 206, 207, 208, 211, 212, 213, 215, 216, 217, 301, 302, 303, 304, 305, 306, 307, 308, 309, 311, 312, 313, 315, 316, 317



2 Bedroom

Units 114, 210, 214, 310, 314



Accessible 1 Bedroom Plan 1A

Units 109, 209



Accessible 2 Bedroom Plan 2A

Units 110

