



# CAMAS COMMONS

5140 SW Meadow Flower Drive  
 Corvallis, OR 97333  
 Phone: 541-753-6885  
 Fax: 541-753-0441  
 CamasManager@L-BHA.org

## Affordable duplexes & triplexes featuring:

- Fully equipped kitchens with refrigerator, stove & dishwasher
- Washer & dryer hookups
- Energy efficient design & appliances
- On Corvallis bus route
- Near shopping center
- Handicap accessible units available
- Large community room with full kitchen & child playroom
- Laundry facilities onsite
- Outdoor play area, including playground & half-court basketball
- Non-smoking property



### Camas Commons serves families at or below 50% of area median income.

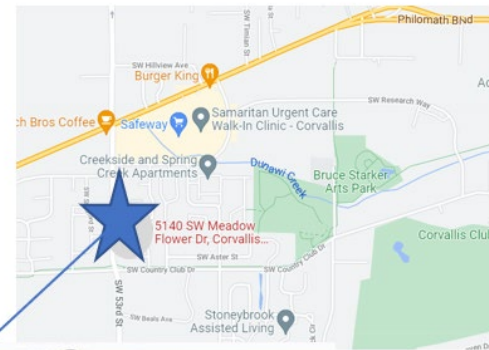
We have 56 units in our complex of which we have 1, 2, 3 and 4-bedroom options. Some one-bedroom units do not have washer and dryer hookups, but there is on site laundry.

#### Annual household income must be less than\*:

\*Income limits are subject to change without notice dependent on HUD guidelines. Effective 4/10/2025

One Person	\$44,300	Two Persons	\$50,600
Three Persons	\$56,950	Four Persons	\$63,250
Five Persons	\$68,350	Six Persons	\$73,400
Seven Persons	\$78,450	Eight Persons	\$83,500

Bedroom Size	# of Units	Square Footage	# of ADA Units
One (1)	10	690	6
Two (2)	12	1,000	4
Three (3)	30	1,200	2
Four (4)	4	1.400	0



#### Current Rents

Effective 01/01/2025

1 Bdrm - \$620
2 Bdrm - \$821
3 Bdrm - \$1,005
4 Bdrm - \$1,094



**PLEASE ONLY RETURN THE APPLICATION PAGES. KEEP THE INFORMATION PAGES FOR YOURSELF.**

Camas Commons is a quality affordable housing community developed in partnership with and co-owned by DevNW and the Linn-Benton Housing Authority. **Managed by LBHA Property Management.** Revised 04/21/2025

**Applications DO NOT update addresses to other properties or programs, including Section 8**

# Unit Floor Plans May Vary

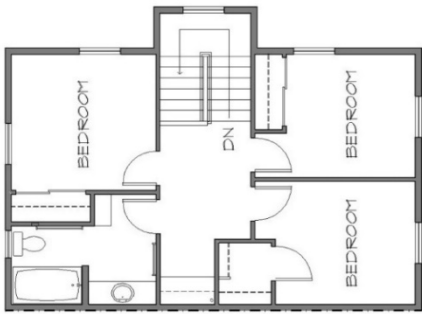
## One Bedroom Sample Floorplan



## Two Bedroom Sample Floorplan



## Four Bedroom Sample Floorplan



## Three Bedroom Sample Floorplan

