

CLAYTON MEADOWS

Affordable Senior Living



2080 SE Queen Ave
Albany, OR 97321
(541) 791-9175



Affordable apartments in Southeast Albany for low-income seniors 55 yrs+:

- Fully equipped kitchens with refrigerator, stove & dishwasher
- 1 & 2 bedroom apartments
- Laundry facilities onsite
- Energy efficient design & appliances
- Near shopping center
- Handicap accessible units available
- Large community room with full kitchen
- Smoke-free property



Clayton Meadows serves seniors and disabled persons, age 55 and older, whose total household income is less than 50% to 60% of the area median income.

Annual household income must be less than*:

| | | | |
|------------|----------|-------------|----------|
| One Person | \$41,880 | Two Persons | \$47,820 |
|------------|----------|-------------|----------|

*Income limits are subject to change without notice dependent on HUD guidelines.

| Bedroom Size | # of Units | Square Footage | # of ADA Units |
|--------------|------------|----------------|----------------|
| One (1) | 32 | 600 | 1 |
| Two (2) | 17 | 825 | 2 |

Rents vary based on income and apartment location:**

| |
|----------------|
| 1 Bdrm - \$763 |
| 2 Bdrm - \$907 |

** Rents are effective 01/01/2025. Rent concessions may result in lower rents for applicants with lower incomes.

PLEASE ONLY RETURN THE APPLICATION PAGES – KEEP THE INFORMATION PAGES FOR YOURSELF.

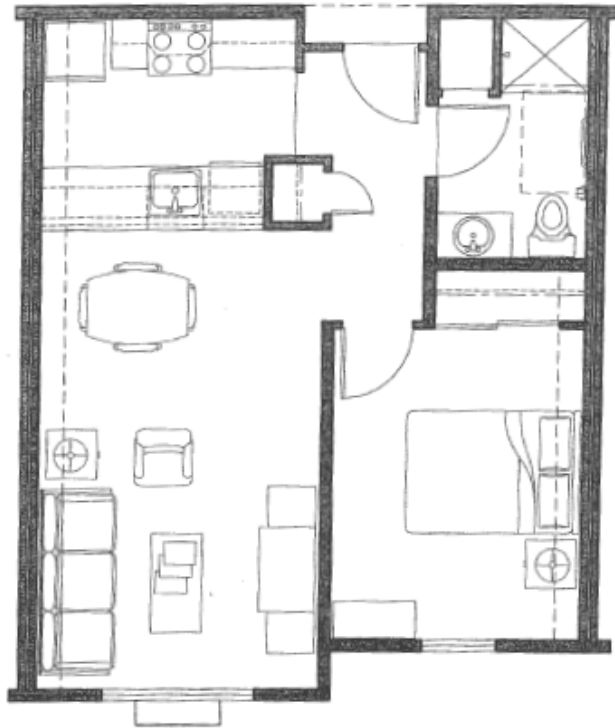
Applications are also available at: Linn -Benton Housing Authority, 1250 Queen Ave SE, Albany, OR 97322
(541) 926-4497

Clayton Meadows is owned and managed by Linn-Benton Housing Authority Property Management. Revised 04/21/2025

Applications DO NOT update addresses to other properties or programs, including Section 8

Unit Floor Plans May Vary

One Bedroom Sample Floorplan



Two Bedroom Sample Floorplan



