

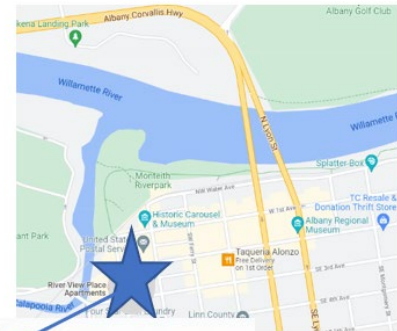


635 Third Ave SW
Albany, OR 97321
(541) 791-7398



Affordable apartments in downtown Albany for low-income seniors 55 yrs+:

- Studio, 1 & 2 bedroom apartments
- City and river views
- Secure building with elevator
- On-site parking available
- Near Albany Senior Center
- Laundry facilities on each floor
- Large community room
- Smoke-free property
- Near City parks, Post Office and Library



River View Place serves seniors, age 55+, whose total household income is less than 60% of the area median income.

Annual household income must be less than* effective 04/10/2025:

One Person	\$38,940	Two Persons	\$44,520
------------	----------	-------------	----------

*Income limits are subject to change without notice dependent on HUD guidelines.

Bedroom Size	# of Units	Square Footage	# of ADA Units
Studio	4	445	0
One (1)	27	600	4
Two (2)	8	810	2

Rents vary based on income and apartment location:**

Studio - \$629
1 Bdrm - \$915
2 Bdrm - \$972

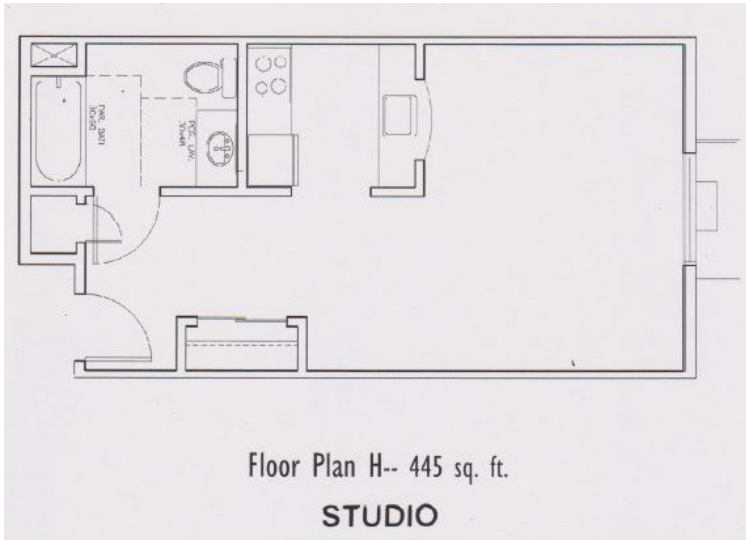
**Rents are effective 01/01/2025. Rent concessions may result in lower rents for applicants with lower incomes.

PLEASE ONLY RETURN THE APPLICATION PAGES – KEEP THE INFORMATION PAGES FOR YOURSELF.

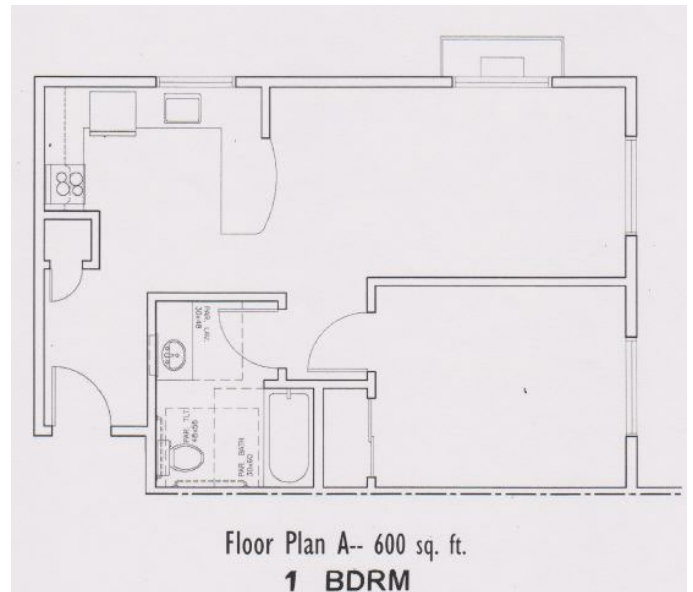
Applications are also available at: Linn -Benton Housing Authority, 1250 Queen Ave SE, Albany, OR 97322
(541) 926-4497

Unit Floor Plans May Vary

Studio Sample Floorplan



One Bedroom Sample Floorplan



Two Bedroom Sample Floorplan

